



Factory Works - Pune



Office & Works - Bangalore

SUDE ENGINEERING PVT. LTD.

(Formerly Named as Sude Engineering Corporation)

Bangalore Works: Plot Number 67 & 68, Near Government ITI college, Magadi Road, Seegehalli, BMTC Depot Road, Bangalore

Pune Works: Gat No. 94/2 , Plot No. 1, Alandi Markal Road ,Village-Dhanore,Tal -Khed , Dist- Pune 412 105

Mob No.+91 9763719688/8956542136/9845018216 ;

Ph No.+91 9763719690 Extn No. 110

GSTIN/UIN: 27ABMCS4842C1Z8

Email ID : sales@sudeengg.com / sudeengg@gmail.com

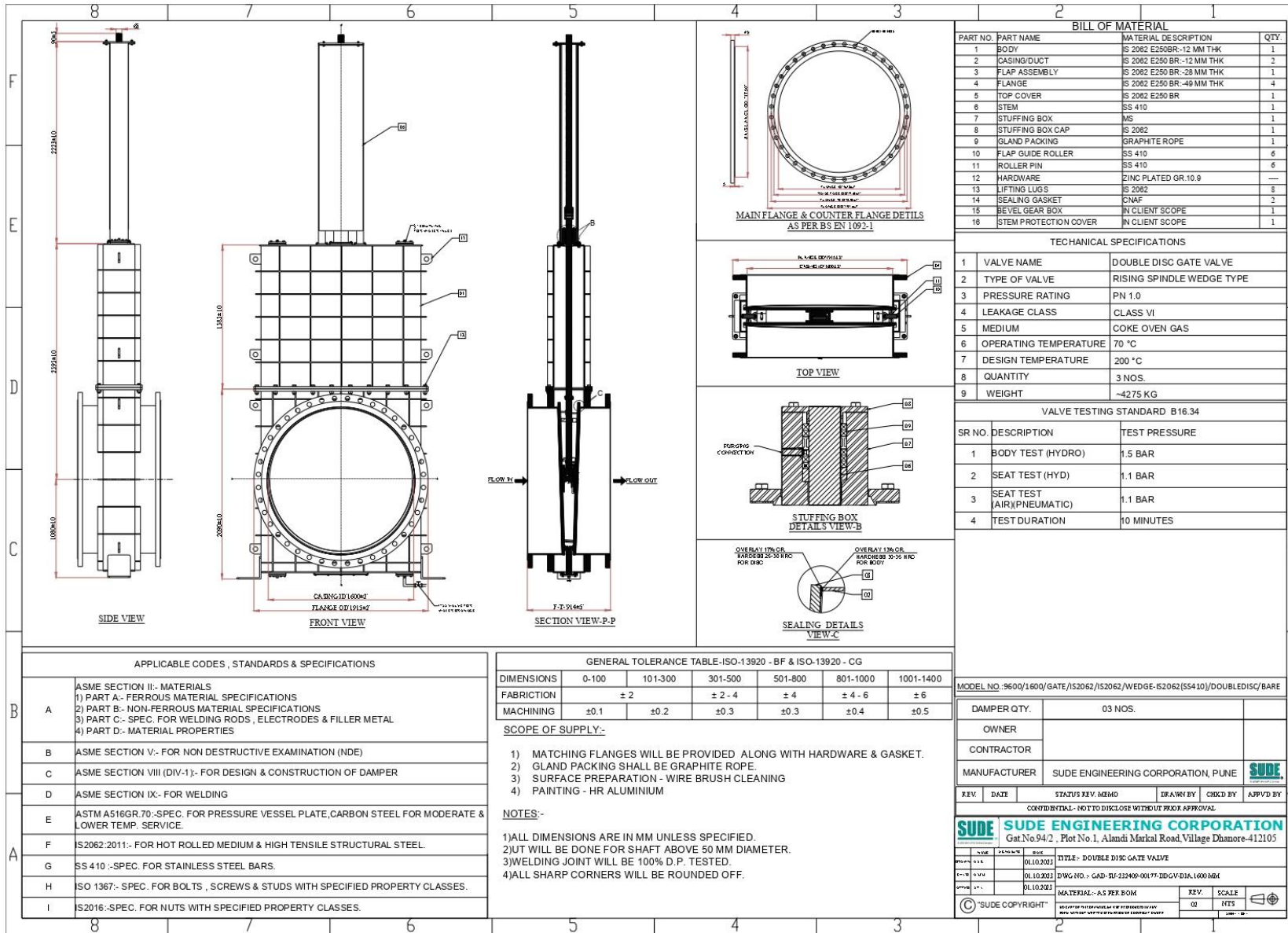
SERIES : 1914- DOUBLE DISC GATE VALVE

Sude Engineering Pvt Ltd. proudly presents the 1914-DDGV Series Gate Valve, meticulously designed for the isolation of gases, particularly in coke oven gas lines with elevated tar content. This series is an ideal solution for isolating highly toxic gas lines and gases containing tar.

Technical Specifications:

- ✓ Size Range: 400mm to 3500mm
- ✓ Valve Design: Bidirectional
- ✓ Maximum Operating Pressure: Up to 0.3 Mpa
- ✓ Maximum Operating Temperature: Up to 250°C
- ✓ Type of Sealing: Metal to Metal
- ✓ End Connection: Flange Ends
- ✓ Orientation: Vertical in Horizontal Pipeline (Default) Horizontal in Vertical Pipeline (On Demand)





| BILL OF MATERIAL | | | |
|------------------|-----------------------|----------------------------|------|
| PART NO. | PART NAME | MATERIAL DESCRIPTION | QTY. |
| 1 | BODY | IS 2062 E250BR-12 MM THK | 1 |
| 2 | CASING/DUCT | IS 2062 E250 BR--12 MM THK | 2 |
| 3 | FLAP ASSEMBLY | IS 2062 E250 BR--28 MM THK | 1 |
| 4 | FLANGE | IS 2062 E250 BR--49 MM THK | 4 |
| 5 | TOP COVER | IS 2062 E250 BR | 1 |
| 6 | STEM | SS 410 | 1 |
| 7 | STUFFING BOX | MS | 1 |
| 8 | STUFFING BOX CAP | IS 2062 | 1 |
| 9 | GLAND PACKING | GRAPHITE ROPE | 1 |
| 10 | FLAP GUIDE ROLLER | SS 410 | 6 |
| 11 | ROLLER PIN | SS 410 | 6 |
| 12 | HARDWARE | ZINC PLATED GR.10.9 | --- |
| 13 | LIFTING LUGS | IS 2062 | 8 |
| 14 | SEALING GASKET | CNAF | 2 |
| 15 | BEVEL GEAR BOX | IN CLIENT SCOPE | 1 |
| 16 | STEM PROTECTION COVER | IN CLIENT SCOPE | 1 |

| TECHNICAL SPECIFICATIONS | | |
|--------------------------|-----------------------|----------------------------|
| 1 | VALVE NAME | DOUBLE DISC GATE VALVE |
| 2 | TYPE OF VALVE | RIISING SPINDLE WEDGE TYPE |
| 3 | PRESSURE RATING | PN 1.0 |
| 4 | LEAKAGE CLASS | CLASS VI |
| 5 | MEDIUM | COKE OVEN GAS |
| 6 | OPERATING TEMPERATURE | 70 °C |
| 7 | DESIGN TEMPERATURE | 200 °C |
| 8 | QUANTITY | 3 NOS. |
| 9 | WEIGHT | ~4275 KG |

| VALVE TESTING STANDARD B16.34 | | |
|-------------------------------|---------------------------|---------------|
| SR NO. | DESCRIPTION | TEST PRESSURE |
| 1 | BODY TEST (HYDRO) | 1.5 BAR |
| 2 | SEAT TEST (HYD) | 1.1 BAR |
| 3 | SEAT TEST (AIR/PNEUMATIC) | 1.1 BAR |
| 4 | TEST DURATION | 10 MINUTES |

| APPLICABLE CODES, STANDARDS & SPECIFICATIONS | |
|--|---|
| A | ASME SECTION II:- MATERIALS 1) PART A:- FERROUS MATERIAL SPECIFICATIONS 2) PART B:- NON-FERROUS MATERIAL SPECIFICATIONS 3) PART C:- SPEC. FOR WELDING RODS, ELECTRODES & FILLER METAL 4) PART D:- MATERIAL PROPERTIES |
| B | ASME SECTION V:- FOR NON DESTRUCTIVE EXAMINATION (NDE) |
| C | ASME SECTION VIII (DIV-1):- FOR DESIGN & CONSTRUCTION OF DAMPER |
| D | ASME SECTION IX:- FOR WELDING |
| E | ASTM A516GR.70:-SPEC. FOR PRESSURE VESSEL PLATE,CARBON STEEL FOR MODERATE & LOWER TEMP. SERVICE. |
| F | S2062:2011:- FOR HOT ROLLED MEDIUM & HIGH TENSILE STRUCTURAL STEEL. |
| G | SS 410 :-SPEC. FOR STAINLESS STEEL BARS. |
| H | ISO 1367:- SPEC. FOR BOLTS, SCREWS & STUDS WITH SPECIFIED PROPERTY CLASSES. |
| I | S2016:-SPEC. FOR NUTS WITH SPECIFIED PROPERTY CLASSES. |

| GENERAL TOLERANCE TABLE-ISO-13920 - BF & ISO-13920 - CG | | | | | | |
|---|-------|---------|---------|---------|----------|-----------|
| DIMENSIONS | 0-100 | 101-300 | 301-500 | 501-800 | 801-1000 | 1001-1400 |
| FABRICATION | ± 2 | ± 2 - 4 | ± 4 | ± 4 - 6 | ± 6 | |
| MACHINING | ±0.1 | ±0.2 | ±0.3 | ±0.3 | ±0.4 | ±0.5 |

SCOPE OF SUPPLY:-

- MATCHING FLANGES WILL BE PROVIDED ALONG WITH HARDWARE & GASKET.
- GLAND PACKING SHALL BE GRAPHITE ROPE.
- SURFACE PREPARATION - WIRE BRUSH CLEANING
- PAINTING - HR ALUMINIUM

NOTES:-

- ALL DIMENSIONS ARE IN MM UNLESS SPECIFIED.
- UT WILL BE DONE FOR SHAFT ABOVE 50 MM DIAMETER.
- WELDING JOINT WILL BE 100% D.P. TESTED.
- ALL SHARP CORNERS WILL BE ROUNDED OFF.

MODEL NO.: 9600/1600/GATE/IS2062/IS2062/WEDGE-IS2062(S5410)/DOUBLEDISC/BARE

| | | | | | | |
|---|------------------------------------|--------|-----------|----------|------------|-------------|
| DAMPER QTY. | 03 NOS. | | | | | |
| OWNER | | | | | | |
| CONTRACTOR | | | | | | |
| MANUFACTURER | SUDE ENGINEERING CORPORATION, PUNE | | | | | |
| REV. | DATE | STATUS | REV. MEMO | DRAWN BY | CHECKED BY | APPROVED BY |
| CONFIDENTIAL - NOT TO DISCLOSE WITHOUT PRIOR APPROVAL | | | | | | |

SUDE ENGINEERING CORPORATION
Gat No 94/2, Plot No. 1, Alandi Marikal Road, Village Dhanore-412105

| | | |
|------|------------|--|
| REV. | DATE | TITLE |
| 01 | 01.10.2023 | DOUBLE DISC GATE VALVE |
| 02 | 01.10.2023 | DWG NO. :- GAD-SU-232408-001 P1 ID:GV-DIA.1600MM |
| 03 | 01.10.2023 | MATERIAL:- AS PER BOM |

SCALE: NTS



SUPPLIED TO JSW









LAPPING



ACTUATOR SUPPORT ASSEMBLY



LEAD SCREW ASSEMBLY

BONNET ASSEMBLY



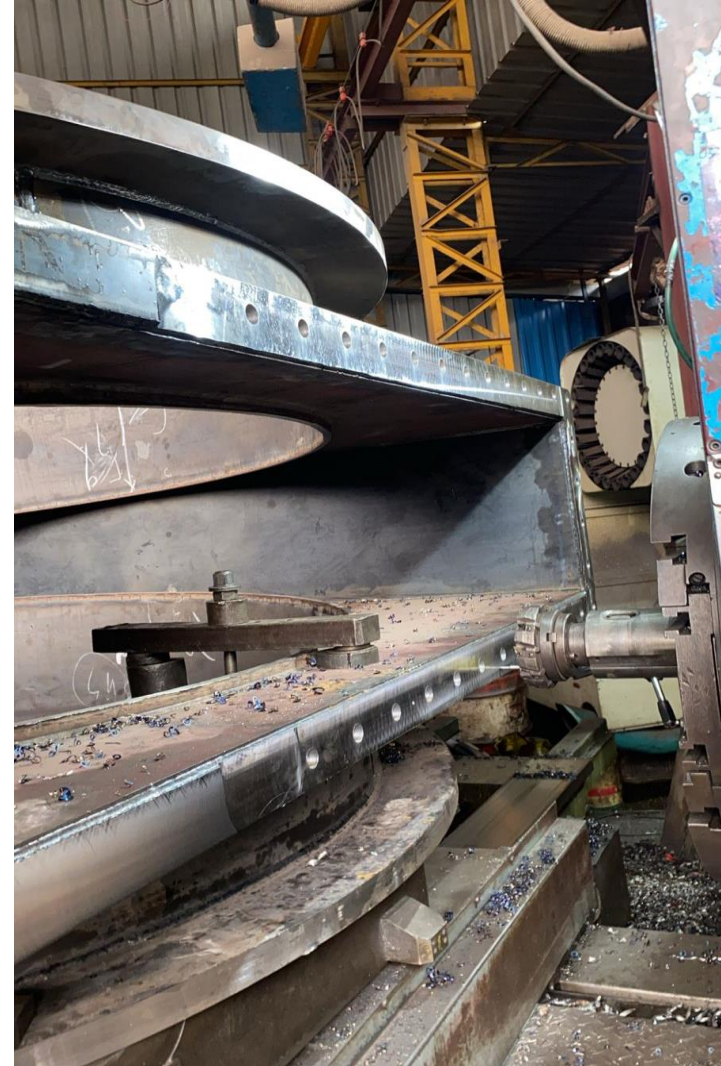
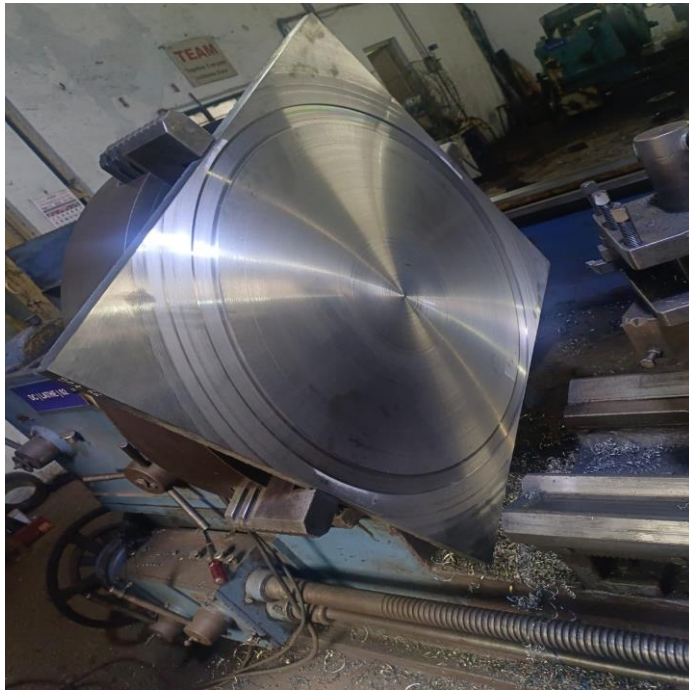
BODY ASSEMBLY



WELDING IN PROGRESS



FLAP PROOF MACHNING



VALVE SEAT MACHINING



MACHINING SHOP



FINISHED VALVE AFTER FINAL PAINTING



TRANSPORT TO SITE